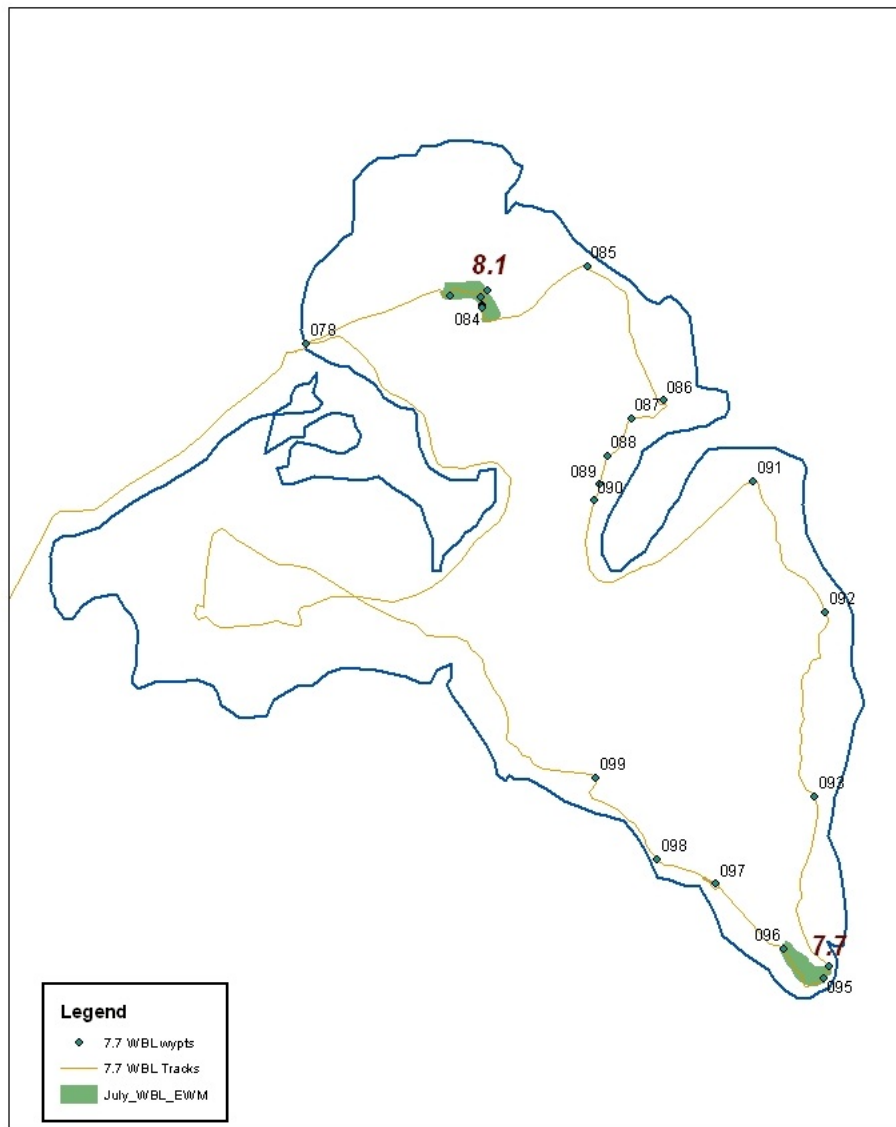


White Bear Lake Milfoil Assessment – July 7, 2010

Prepared by Steve McComas, Blue Water Science, St. Paul, MN with assistance from John Steinworth, Mike Parenteau, and Yale Norwick, White Bear Lake Conservation District

On July 7, 2010 the status of Eurasian watermilfoil growth was assessed in White Bear Lake. Two additional milfoil sites were delineated and areas within a site are listed in Figure 1. The northern patch is 8.1 acres and the southern patch is 7.7 acres. Milfoil was generally growing 0-1 feet from the water surface, although it was sometimes found down to two feet below the surface.

White Bear Lake

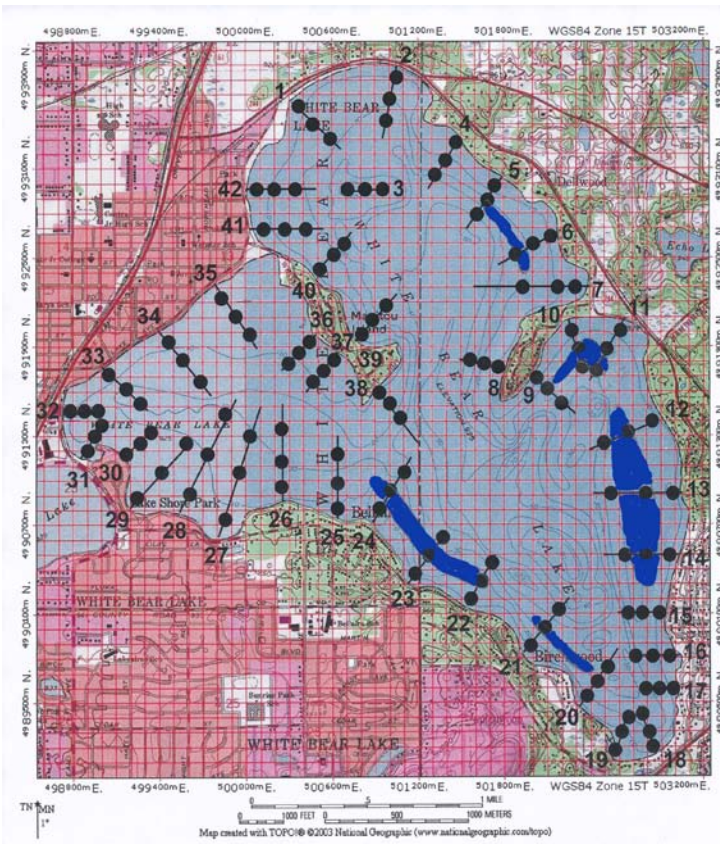


In general, the heaviest growth of milfoil in White Bear Lake is in water depths of 8 to 11 feet deep.

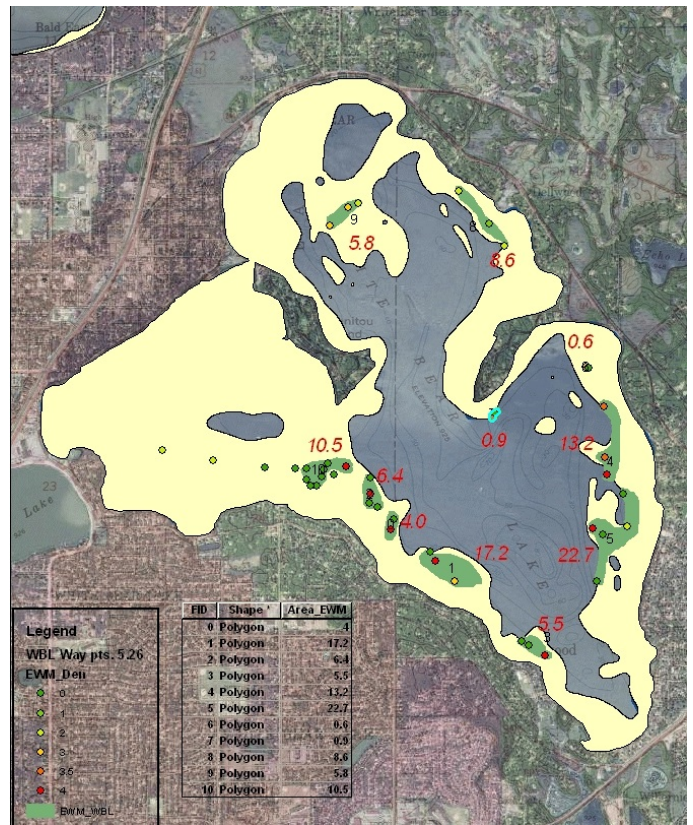
A summary of EWM maps from 2009 and 2010 is shown in Figure 2.

July 12, 2010
UTM NAD 83
Prepared by Blue Water Science

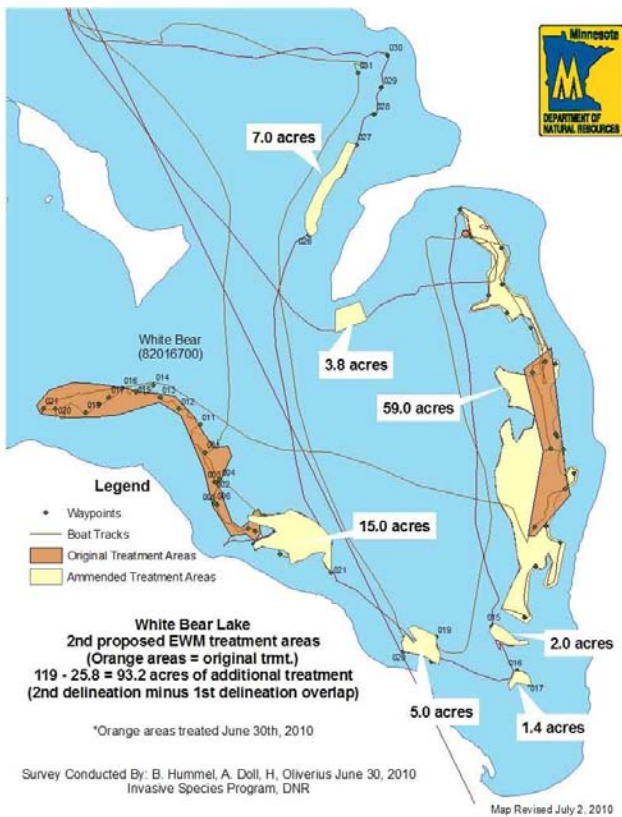
Figure 1. Two additional Eurasian watermilfoil heavy growth areas were delineated on July 7, 2010 and are shown in green shading along with the track and waypoints that were checked.



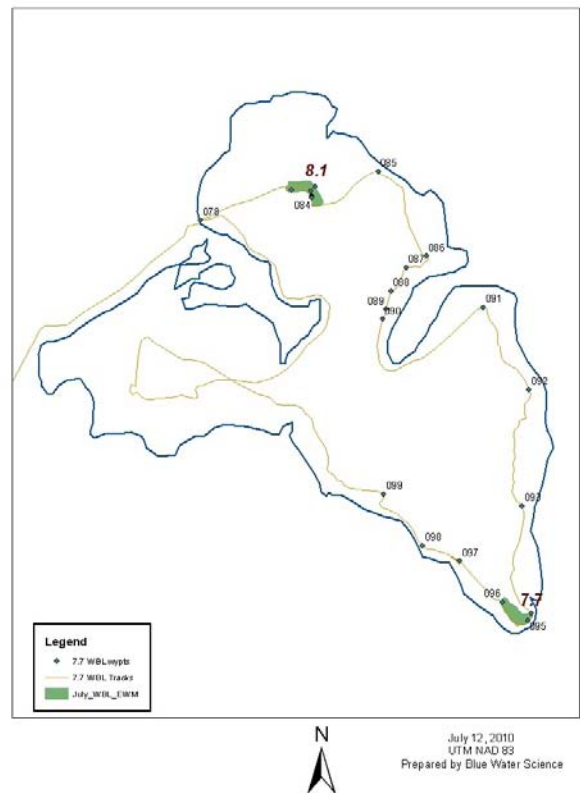
2009 - Heavy Growth



**May 26, 2010 - WBLCD
White Bear Lake**



June 30, 2010 - MnDNR (permitted acres)



July 7, 2010 - WBLCD (two new patches)

Figure 2. Eurasian watermilfoil areas of significant growth in 2009 and in 2010.



Figure 3. (Top) Eurasian watermilfoil found with matting conditions on July 7, 2010. (Bottom) Eurasian watermilfoil was found to be at nuisance conditions at a number of locations around White Bear Lake on July 7, 2010.